

**DUBAI ISLANDS**

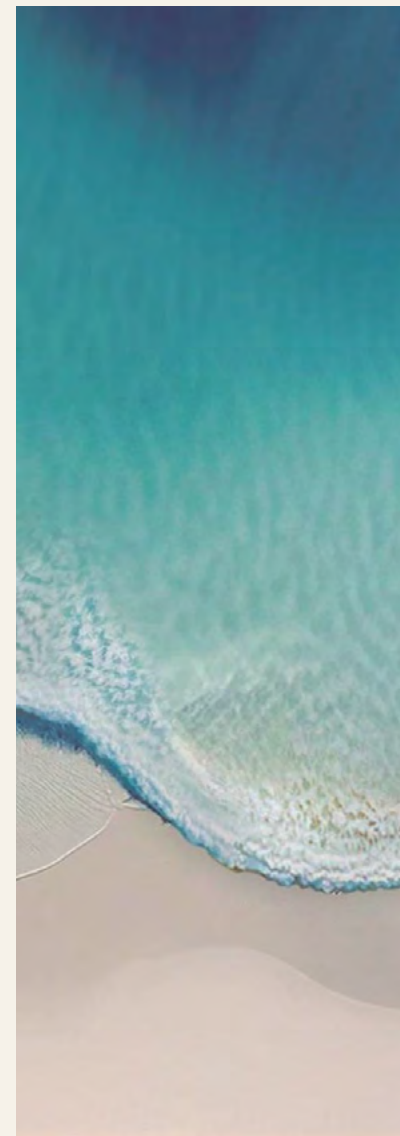


**BAYGROVE**  
RESIDENCES

**NAKHEEL**

Where your *home* is your connection  
to life at the edge of the sea.





## INTRODUCTION

With its prestigious *beachfront lifestyle*, Bay Grove Residences at Dubai Islands is a place where you can embrace a fresh routine.

This unique setting seamlessly blends the city's vibrant culture with lively beach areas, providing a perfect mix of relaxation and excitement.

Welcome to a unique living experience.  
*Here you will savour a relaxation and comfort like no other.*

01

# The Perfect *Coastal* Setting



## DUBAI ISLANDS

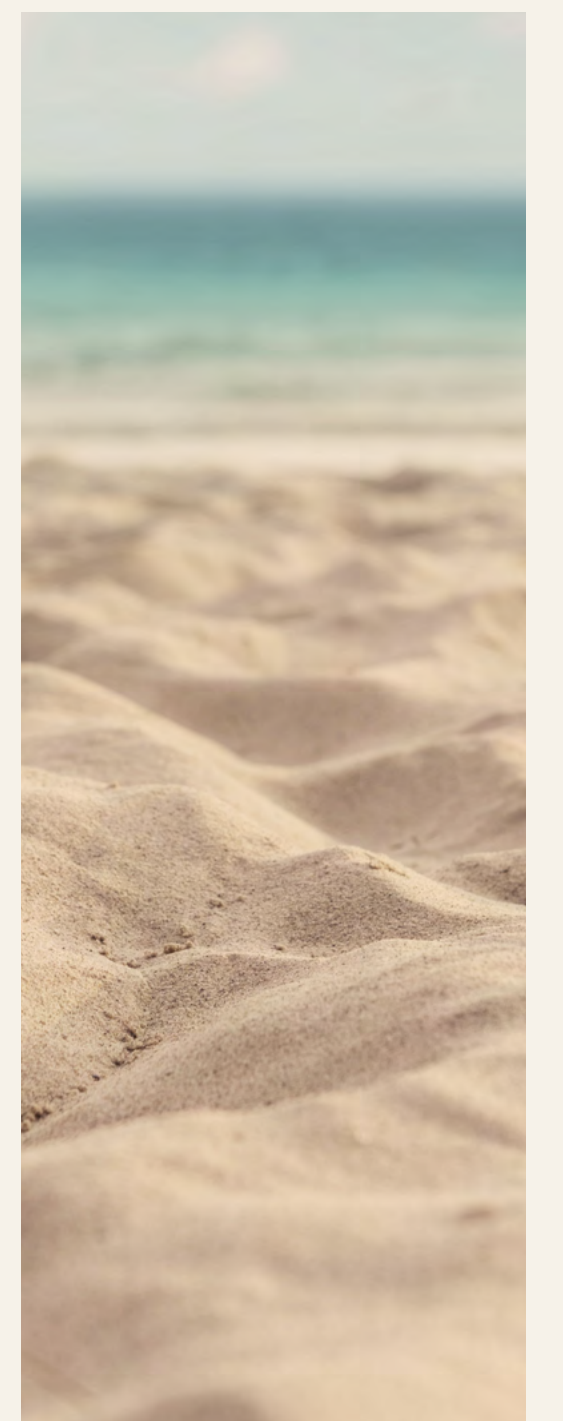
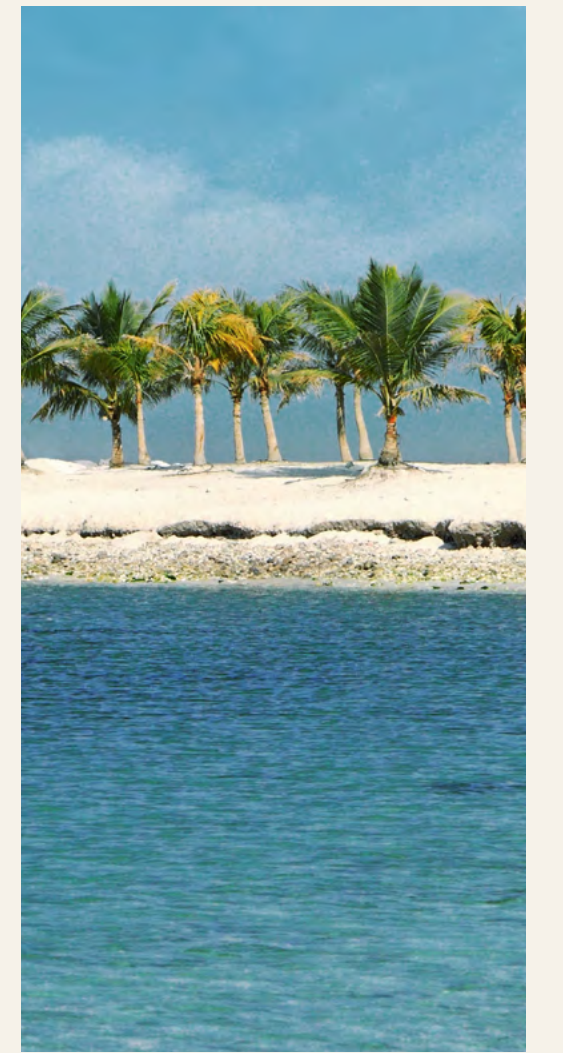
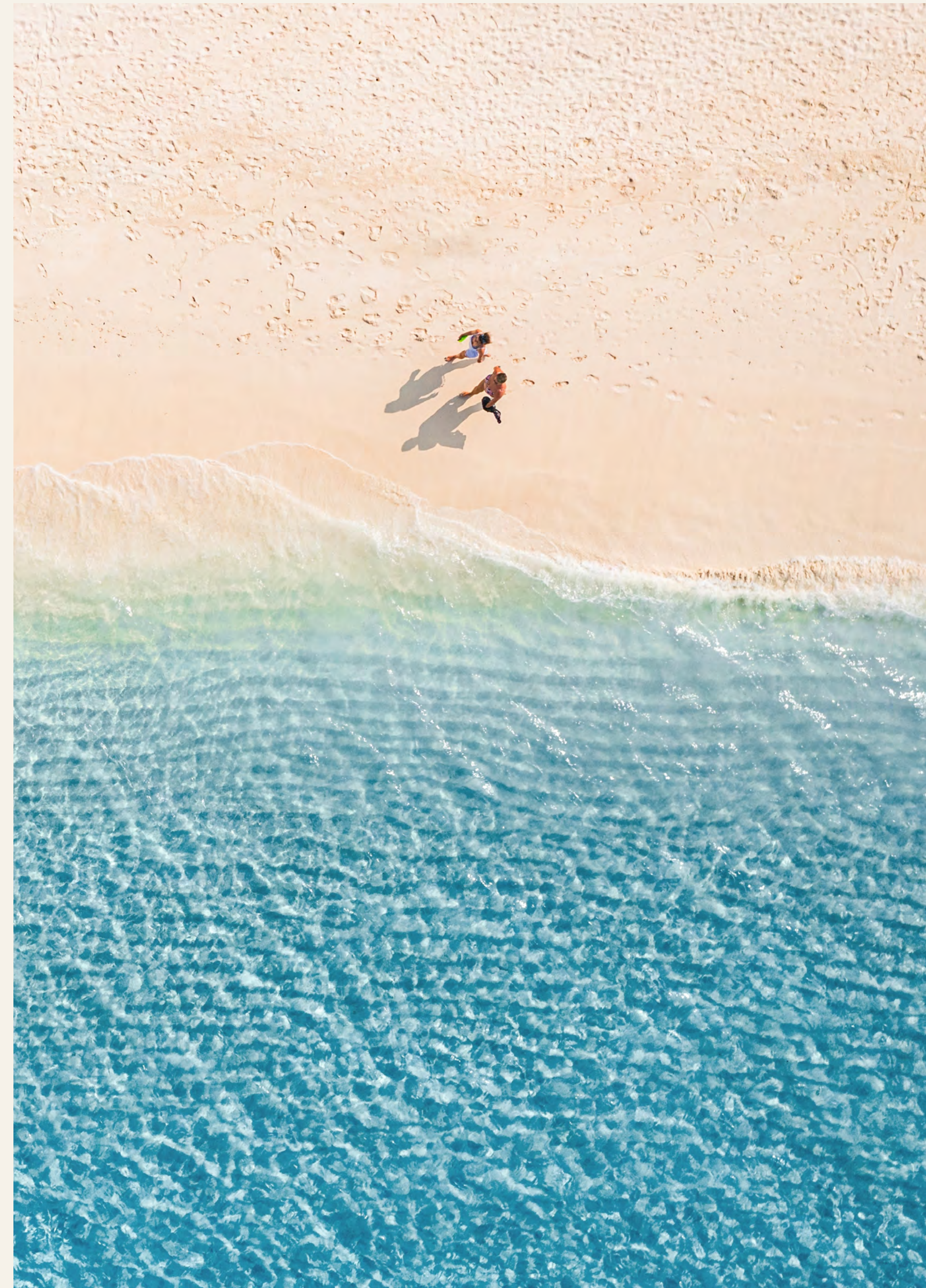
Discover the unique  
charm of Dubai Islands.  
*A natural haven* with  
modern influences.

Located just north of the city, Dubai Islands features more than **50 km of stunning waterfront homes**, **20 km of beaches**, and **vast premium golf spaces**. With the new access bridge and Infinity bridge, this coastal oasis remains closely connected to the city's vibrant historic centre. With its **beautiful landscape** filled with **parks** and **amenities** tailored to experiences for all age groups, Dubai Islands has a unique charm that keeps you in touch with nature.

## ISLAND B

At Island B, discover dazzling *sea views* and *pristine shores*, all within the sight of the city's lights.

Being one of the nearest to the mainland, Island B is designed for *various styles of beachfront living*, from waterfront strolls to exhilarating watersports. Island B is closely connected to Dubai's most iconic dining and entertainment locations.





# BAYGROVE RESIDENCES

DUBAI ISLANDS

AL MAMZAR BEACH PARK

ISLAND B

S Victoria International School

S Pristine Private School Main Campus

S The Elite English School

H Dubai Hospital

S The Apple International School Primary Campus

H Canadian Specialist Hospital

PORT RASHID

INFINITY BRIDGE

DEIRA

DUBAI INTERNATIONAL AIRPORT

M BURJUMAN MALL

THE WORLD ISLANDS

H International Modern Hospital

DUBAI

H Clemenceau Medical Center Hospital

S Swiss International Scientific School in Dubai

JUMEIRAH

M DUBAI MALL

DOWNTOWN DUBAI

S Safa British School

S Collegiate International School

An aerial architectural rendering of the Baygrove Residences development. The scene shows a large, crescent-shaped artificial island with a complex residential layout. Numerous multi-story apartment buildings are arranged in curved rows, interspersed with lush greenery, palm trees, and winding pedestrian paths. A prominent feature is a large, curved building with a white, ribbed facade. The island is surrounded by dark blue water, and the sky is filled with soft, golden light, suggesting a sunset or sunrise. A semi-transparent blue graphic element, resembling a stylized 'C' or a curved arrow, points towards the central part of the island.

BAYGROVE  
RESIDENCES





BAYGROVE  
RESIDENCES

PHASE 3



02

A Vision of  
*Seaside* Living



## Scenic *waterfront* living.

Located in the Island's Marina district, Bay Grove Residences invite you to explore this **vibrant residential ecosystem**. Nestle into an elegant private retreat with beautiful apartments designed to accommodate both families and individuals alike. Residents can enjoy beautiful features like the boardwalk immersed in lush greenery and an exclusive raised ocean pool on the beachfront. Bay Grove Residences also offer a variety of **family-friendly entertainment**, including **play areas**, **verdant podium-level gardens**, **sunlit paths** for biking and walking, and **scenic sea views**. Fostering connections within this unique community has never felt simpler.







## BUILDINGS AND ARCHITECTURE

Combining convenience  
with *elegance*.

Bay Grove Residences consist of **3 residential buildings** connected via a verdant green podium and infinity pool. The tallest residential building has 20 floors and together the residences offer a total of 241 units offering a mix of **1-, 2-, and 3-bedroom apartments**, as well as **4-bedroom duplexes**. These residences overlook the podium garden and raised ocean pool, blending life with maritime nature.



03

Design with  
*Ocean Views*





## THE APARTMENTS

Enjoy the pleasures of *seaside living* and discover a sense of *well-being*.

Revel in ***spacious terraces*** overlooking the dazzling blue sea and lush greenery and indulge in the outdoor space and ***variety of amenities*** our community has to offer.

## THE APARTMENTS

# Enjoy *resort-style living* in our 1-, 2-, or 3-bedroom apartments.

Savour the essence of coastal living with our **1-, 2-, or 3-bedroom apartments** at Bay Grove Residences.

Each home invites relaxation against the backdrop of a radiant city skyline or verdant podium gardens. Enjoy spaces **designed for comfort and relaxation**, featuring elegant interiors and seamless transitions between indoor and outdoor living with stunning private terraces. Ample storage solutions ensure your space remains uncluttered and serene.

With terraces overlooking the green podium as well as the infinity pool, Bay Grove Residences provide a sanctuary that effortlessly combines the serenity of natural daylight with the soothing fresh air and natural surroundings.



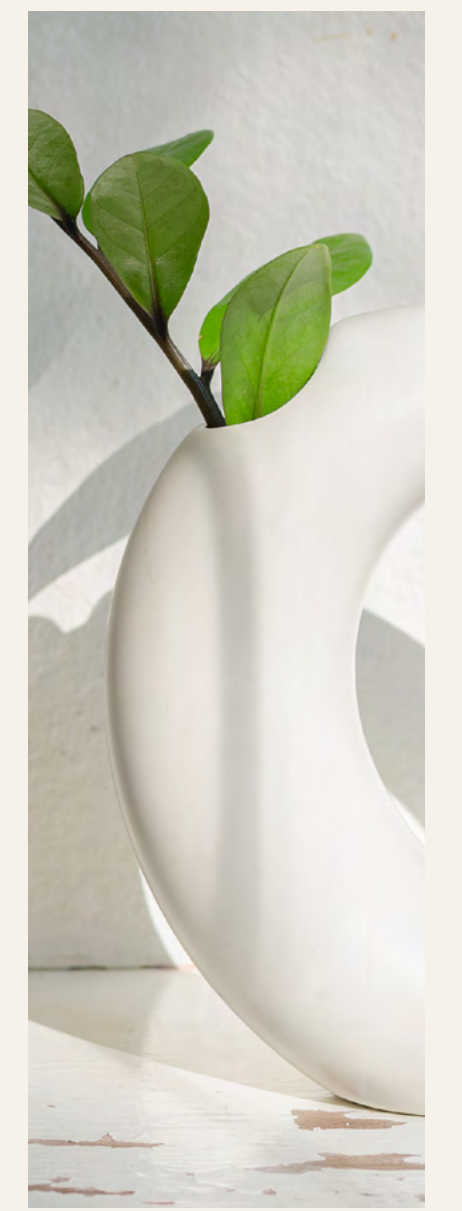
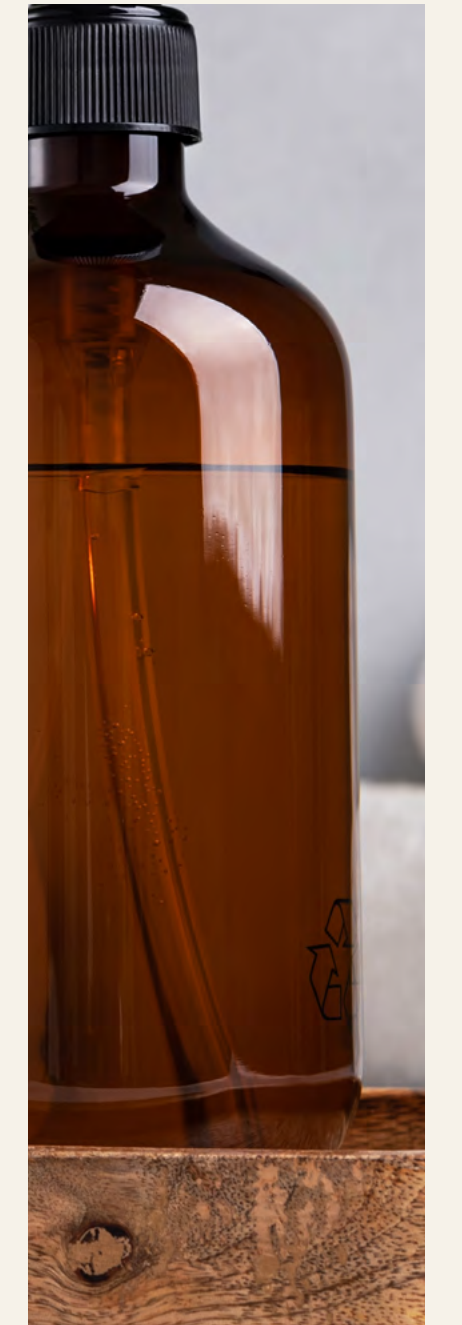
Typical Kitchen

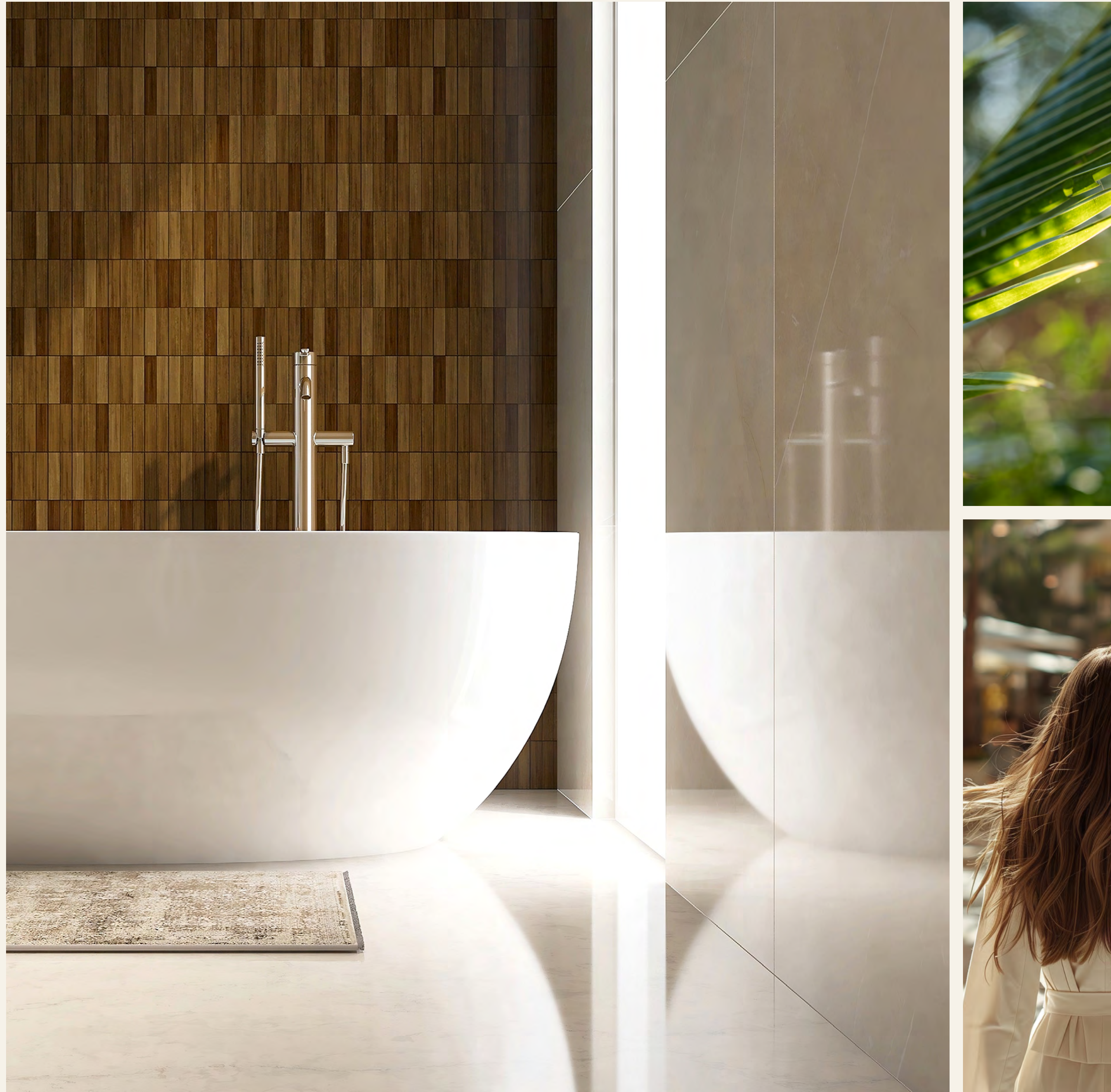






Typical Primary Bathroom





## THE APARTMENTS

Relish the seamless  
*indoor-outdoor living*  
in our 4-bedroom duplexes.

Each of our **4-bedroom duplexes** is meticulously designed to maximise space, comfort, and sophistication. These tasteful interiors, combined with the best views from the terraces, seamlessly blend indoor and outdoor living. Expansive terraces offer the **stunning vistas of the city skyline** and tranquil waters, ideal for entertaining guests or enjoying private relaxation.









## INTERIORS

Step into a world of refined elegance with *ample living spaces*.

Indulgent city views await you in our refined apartments, featuring ***ample living spaces and floor-to-ceiling windows*** that flood the rooms with natural light.

Enjoy a ***contemporary style with soft, soothing tones and warm, earthy wood grain accents***. Elegant engineered stone countertops and carefully crafted lacquer cabinetry blend style and functionality, perfect for everyday meals and gourmet cooking.

Well-proportioned cabinetry provides plenty of pantry space, ensuring a ***seamless blend of aesthetics and practicality*** in your urban retreat.





INTERIORS

## Unwind in this contemporary retreat with *serene sea views*.

Elegant simplicity, illuminated by generous windows, shapes your bedroom into a **residential haven**.

Your bedroom offers a peaceful retreat, complete with an ensuite primary bathroom, ample room sizes and wardrobe space.

**Explore the exquisite finishes** that adorn each apartment residence, enhancing the overall aesthetic and quality of living.



# Coastal Sanctum

Explore the exquisite finishes that adorn each apartment residence.





TERRACES & PANORAMIC VIEW

*Iconic landmarks as far as the eye can see.*

Surround yourself with the ambiance of *Dubai's vibrant culture* and peer into *the city skyline* from your private terrace.

04

*Resort-Style*  
Life Awaits





THE AMENITIES

Immerse yourself in a vibrant community enriched by exceptional experiences.



### Indoor/Outdoor Kids' Play Area

Fit with a pantry, a baby changing room, and indoor and outdoor play structures.



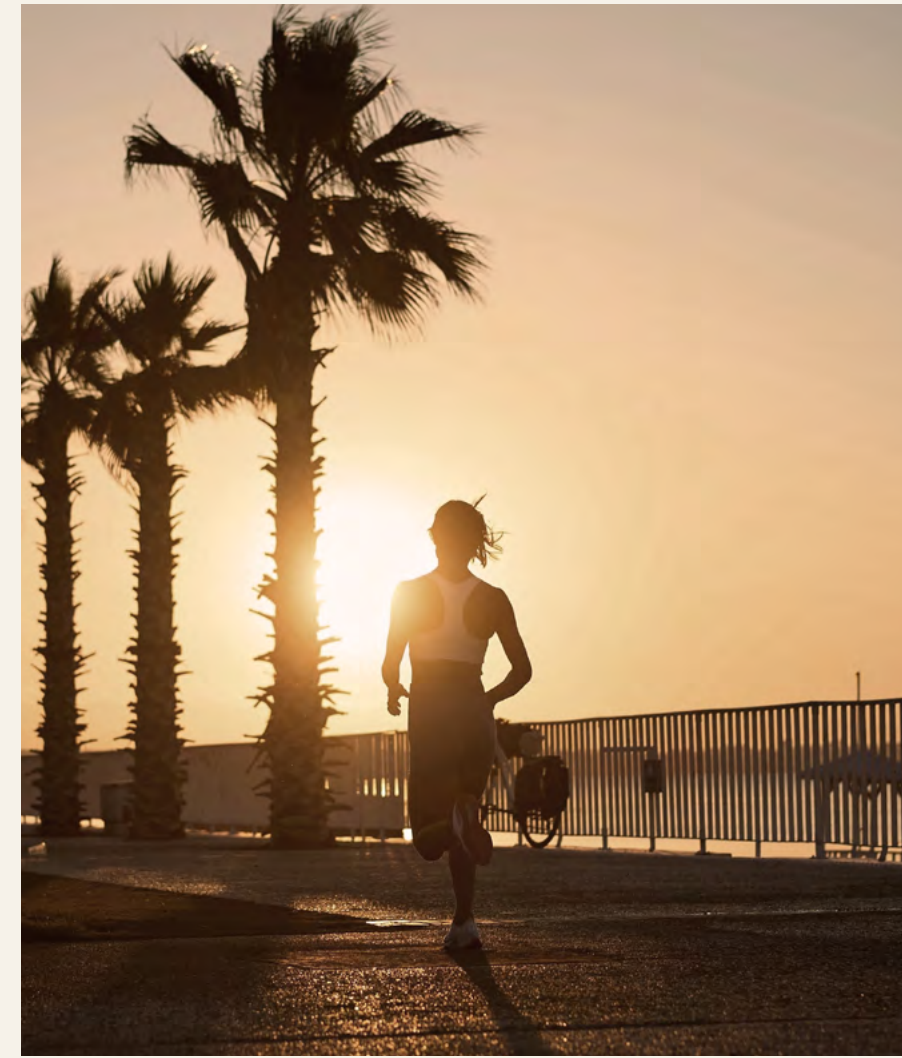
### Fitness Centre

Multipurpose training and Yoga for all levels.



### Adult and Kids' Pools

With poolside deckchairs and relaxation areas.



### Beach Boardwalk

Running paths and beachside activities with panoramic views.



### Clubhouse

Includes a private dining room for classy parties.

PODIUM-LEVEL GARDENS

Relax amidst the lush greenery of our *podium-level gardens* at Bay Grove Residences.

Designed as a retreat from urban hustle, these gardens offer serene pathways, shaded seating areas, and verdant flora, creating a **peaceful oasis** for residents to enjoy.





Clubhouse



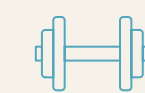
CLUBHOUSE | RESIDENTS' LOUNGE

Bay Grove Residences provide an elegant Clubhouse and Residents' Lounge where residents can share moments in an **exclusive setting**. Fitted with exquisite finishes, furniture and a **dining room**, the Clubhouse offers residents a unique way to connect with each other just steps away from home. Enlivening one's night with gatherings, meetings or family celebrations is all it takes to socialise in style.



Clubhouse Lounge





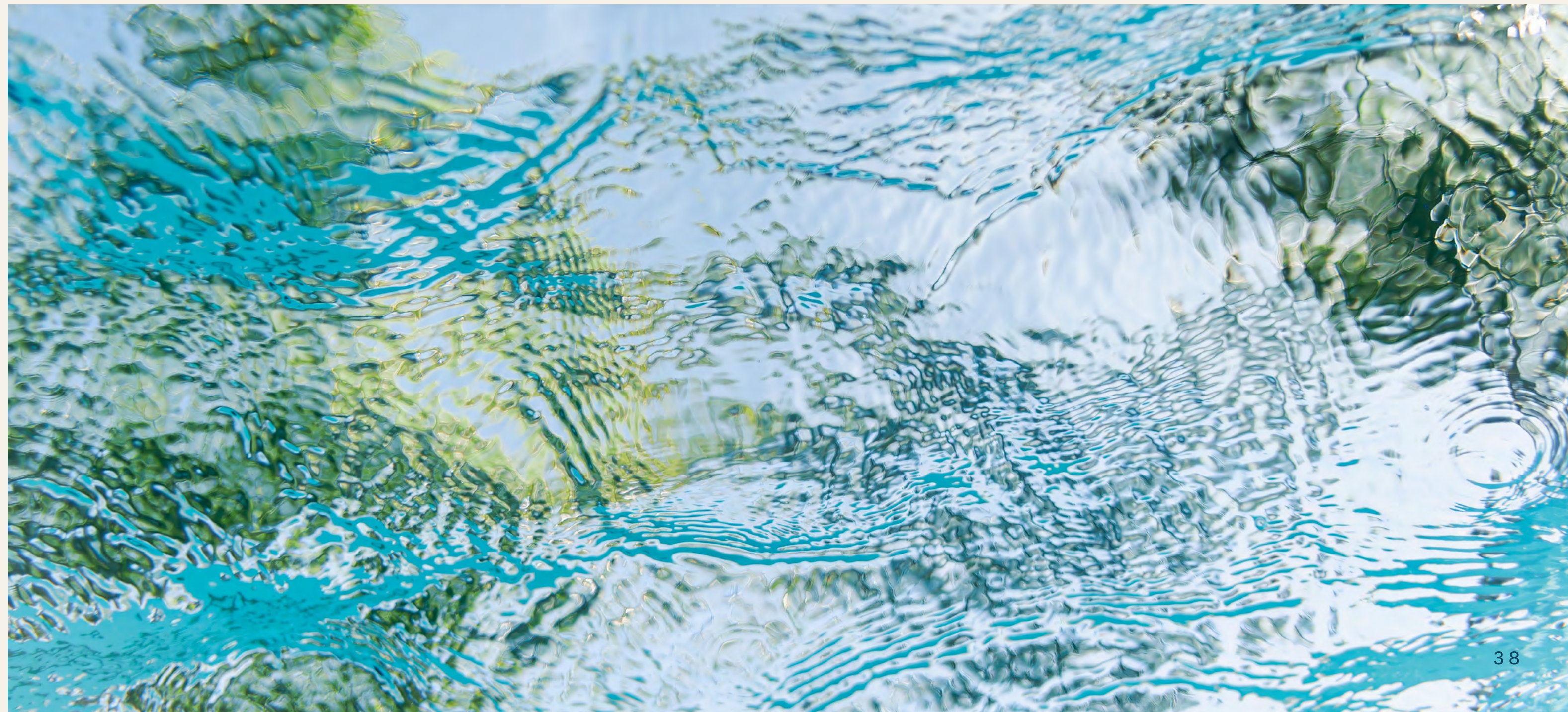
## FITNESS CENTRE

Equipped with **cutting-edge technology**, our Fitness Centre empowers residents to maintain and enhance their fitness routines. Catering to all levels of training, the centre features a wide range of exercise machines, tools, and activities. Dedicated spaces for **cardio, strength training, and yoga** ensure a well-rounded fitness experience. Each workout session offers an opportunity to bond with neighbours, fostering a sense of community while staying active.



ADULT AND KIDS' POOLS

Dive into tranquillity at our inviting infinity pool, where the serene waters overlook breathtaking views of the sea. Indulge in a refreshing *swim, enjoy shaded peaceful rest by the poolside,* or soak up the sun against stunning city vistas. Families may also bask in the sun and enjoy moments of blissful relaxation by the *dedicated kids' pool area,* ensuring safe and enjoyable water play for children.





#### INDOOR AND OUTDOOR KIDS' PLAY AREAS

Our residence offers an array of dedicated kids' facilities to promote children's creativity and well-being. The internal play area is a **space filled with bright colours and engaging activities**, where children can play, letting their imaginations run wild. This area also includes family-friendly structures, such as a small pantry and a kids' toilet room with miniature fixtures and a baby changing table, providing **added comfort and convenience for parents**.

Additionally, **there are open-air child-friendly activities** making for an ideal spot for kids to explore and enjoy outdoors. Perfect for hosting memorable birthday parties, our spaces ensure that your child's special day is both fun and stress-free.





# Additional Amenities

- Hospitality-quality drop-off with water features
- 4 lobbies
- 24/7 security and on-site FM office
- Clubhouse for social gatherings
- Dedicated co-working spaces
- Outdoor BBQ and entertainment zone
- Fully equipped indoor gymnasium
- Outdoor fitness area
- Indoor kids' play area
- Outdoor kids' club
- Pet wash station
- Visitors parking
- Dedicated bicycle parking
- Access to swimmable beach and boardwalk
- Access to community park, jogging, and cycling paths





## THE DEVELOPER

Nakheel, a *global pioneer* in master development, consistently delivers *award-winning projects* driven by an unyielding pursuit of excellence.

**NAKHEEL** envisions creating enduring legacies and lasting inspirations for future generations. In their strive for perfection and happiness, one of their most ambitious projects yet is the creation of the Dubai Islands — an architectural and urban landmark comprised of five islands. Their vision is to propose sophisticated lifestyles and foster the building of an outstanding community at the forefront of Dubai's lively scene.



DISCOVER MORE

BAYGROVE.NAKHEEL.COM

800 NAKHEEL  
NAKHEEL.COM

This publication is for illustrative purposes only. Some of the images shown in the document were developed with computer graphics technology (photorealistic rendering), with reference to details of the façade and elevations, common areas, private areas and interiors of the apartments, for the sole purpose of presenting a plan for future realization and/or the various, potential solutions following user customization. All furniture and art are represented for marketing and rendering purposes only. For this reason, all information, descriptions and images are purely indicative and subject to change. This document has no contractual value and is not binding on the investment company that owns the rights and information reported. The reproduction and the partial use of texts and images is forbidden without prior authorization.



**DUBAI ISLANDS**

**NAKHEEL**