

# MANGROVE

CREEK BEACH



EMAAR

DUBAI CREEK HARBOUR  
THE WORLD OF  
TOMORROW



# DUBAI CREEK HARBOUR

The heart of our bold new vision for Dubai. The eight square kilometre waterfront destination is bound to push the frontiers of architecture, design and the quality of life. Residents of Dubai Creek Harbour enjoy proximity to:



Downtown  
Dubai



Dubai Intl.  
Airport



Wildlife  
Sanctuary



World-class  
Hotels & Resorts





## CREEK BEACH



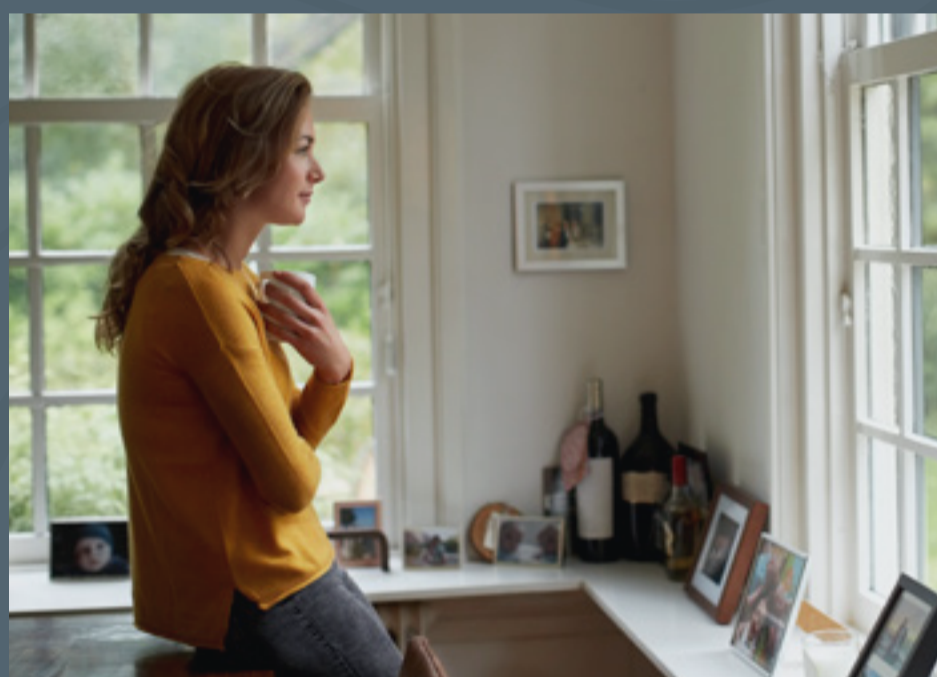
Creek Beach is Dubai's first-of-its-kind urban beach in the heart of Dubai Creek Harbour. Located along the historic Dubai Creek.

Creek Beach is conceived to offer you the ultimate family-friendly retreat. From 700 metres of pristine white sands to the infinity pool and spectacular sunset views, this is paradise reborn.

# WELCOME TO MANGROVE



# ELEVATING THE DEFINITION OF CONTEMPORARY LIVING









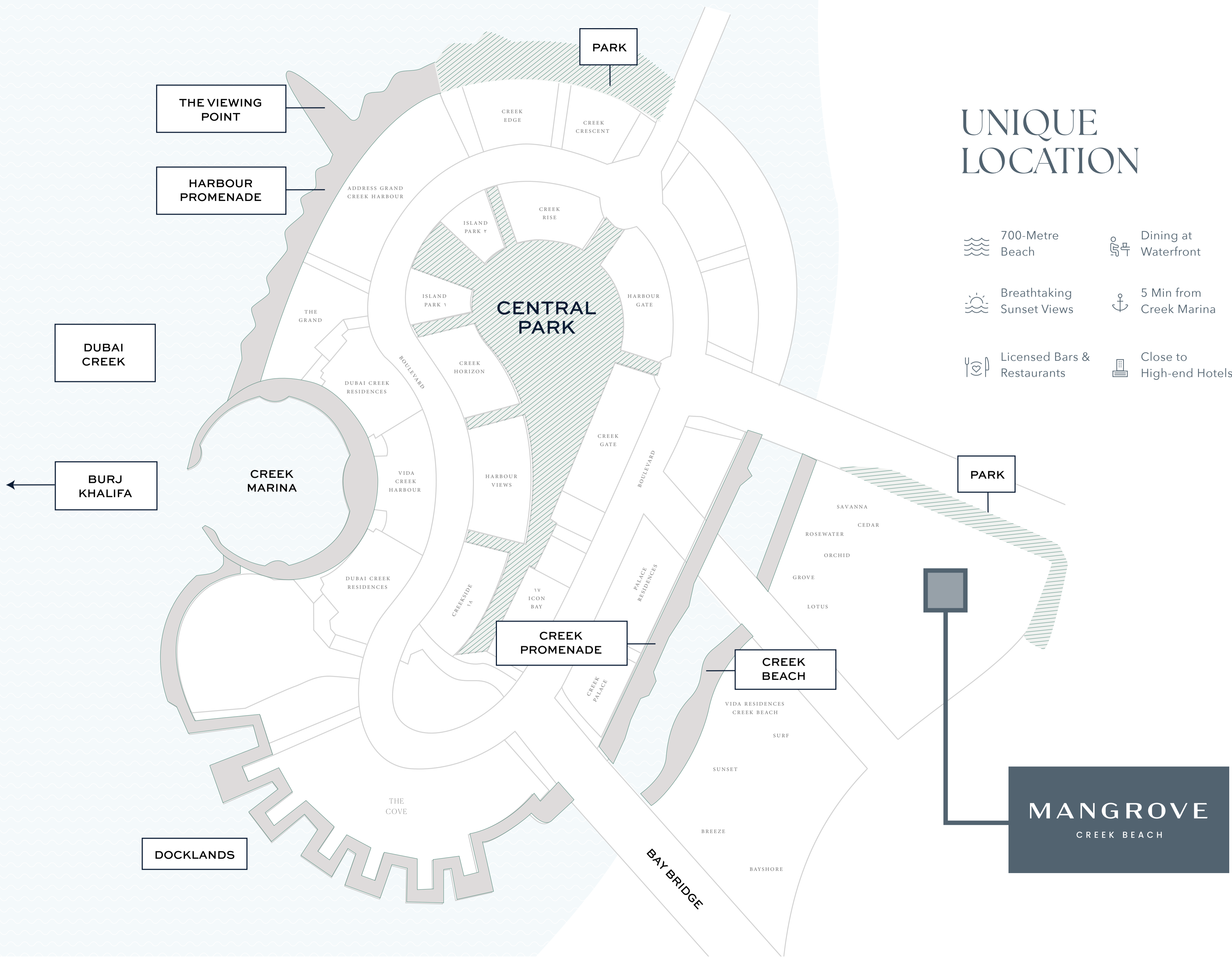
Mangrove is a complex of one, two, and three-bedroom apartments that sits next to a beautiful park.

Elegantly designed buildings in a prime location near top-notch services and a well-connected road system make it easy to experience all that Dubai has to offer.



# UNIQUE LOCATION

-  700-Metre Beach
-  Breathtaking Sunset Views
-  Licensed Bars & Restaurants
-  Dining at Waterfront
-  5 Min from Creek Marina
-  Close to High-end Hotels





## MODERN LIFE AT ITS BEST

Mangrove is a fashionable residential community with two towers rising around a lively central plaza. Offering apartments with one to three bedrooms, the stylish complex features private balconies and terraces with views of the park, creating a resort-like atmosphere.



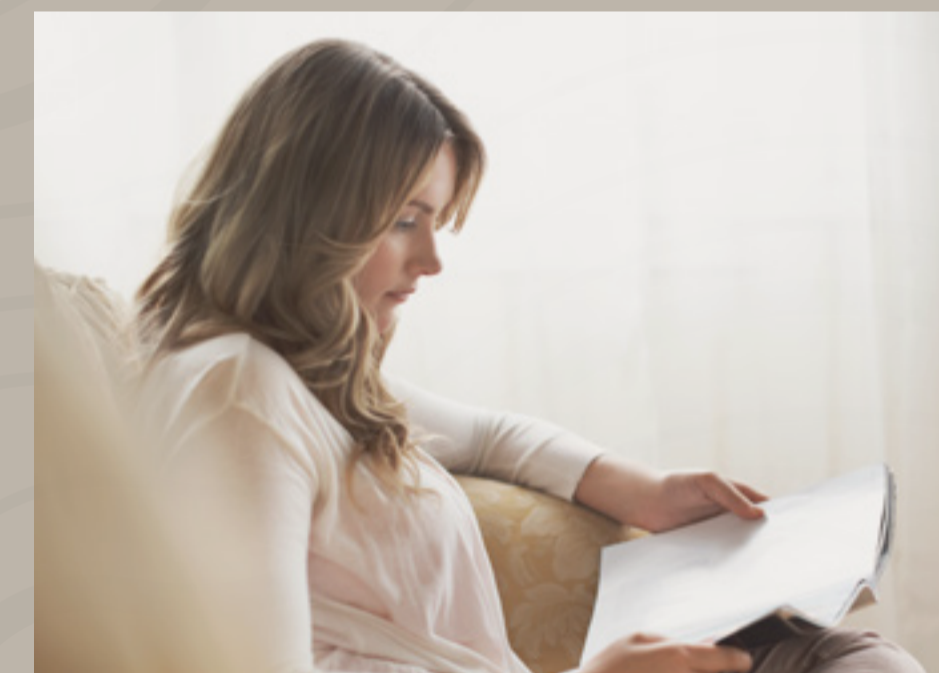


INSPIRING  
A HEIGHTENED  
SENSE OF LIVING





## DISTINCTIVE STYLE



Careful consideration was given to every aspect of each Mangrove home's design in order to maximise living space and natural light and create an ambiance of sleek, modern elegance.

# UNDERSTATED LUXURY



Mangrove's distinctive personality is largely shaped by a minimalist aesthetic that echoes the air of refined sophistication defining the modern home. The apartments, ranging from one- to three-bedroom units, overlook a beautifully landscaped courtyard.





AN ACTIVE & FIT  
WAY OF LIFE





## LEISURE, FUN & RELAXATION

With many unique spots to recharge, escape, relax, and socialise, life in Mangrove is truly one of a kind. Two town squares, a town centre with shops and restaurants, a fitness centre on a private patio, an outdoor play area, a community room, a barbecue area, and a lush lawn are all that you will need to enjoy an active lifestyle.



Town  
Centre



Barbecue  
Facilities



Fully Equipped  
Gym



Outdoor  
Play Area

TODDLERS ONLY PLAY AREA  
FOR THE LITTLE ONES





# FULLY EQUIPPED GYM



SHARING A MOVIE IN THE  
OUTDOOR CINEMA SPACE





## CREEK MARINA

With a wide variety of retail, dining, and recreational options, Creek Marina never slows down. Landscaped pedestrian walkways offer stunning views of Downtown Dubai at dusk, while world-class art pieces add another layer to the trendsetting lifestyle.



Food Trucks



Art Installations



Yacht Club Marina with 81 Berths



Sculptural Viewing Deck



Vida Creek Harbour



Address Hotel

## THE VIEWING POINT



Take in some of the city's most spectacular sights at The Viewing Point at Dubai Creek Harbour. The 11.65m tall and 70-metre long structure spans out over Dubai Creek, with a 26m cantilever projecting out over the water. The walkway offers unobstructed views of the Dubai Creek and surrounding areas, and unique vistas of Downtown Dubai's incredible skyline.





## CENTRAL PARK

The heart of island living, Dubai Creek Harbour Central Park offers residents a tranquil refuge to unwind, first-class amenities to enjoy, and wide-open spaces to discover. With a total area of six football fields, Dubai's Central Park is one of the largest parks in the emirate and offers a variety of activities for the whole family.



Kids' Play Area



Skating Areas



Lawn Amphitheatre



Fitness Plaza



Dog Park

# HARBOUR PROMENADE



Explore a bustling promenade, an impressive skyline as you sit back and relax on the Harbour Promenade. Set sail across Dubai Creek's glistening waters and take in the city's cityscape from a unique vantage point. Enjoy a wonderful meal while taking in the breathtaking views between shopping and boating.





## WORLD-CLASS HOSPITALITY AT YOUR FINGERTIPS

With Address Grand Creek Harbour and Vida Creek Harbour nearby, you can unwind in the comfort of fine dining and private wellness facilities located mere minutes from your residence.



Wellness



Fine Dining



Events



Viewing Deck



Infinity Pool



Fully Equipped Gym

# EMAAR

A leader in the global real estate market, EMAAR has grown over the years to become the largest real estate developer outside of China. You will be investing with one of the best-regarded brands in the world\*.

70.09 Bn AED  
Market Cap - FY 2023

26.7 Bn AED  
Revenue - FY 2023

108,000  
Residential Units Delivered

12+  
Global Market Presence

11.6 Bn AED  
Net Profit - FY 2023

25,500+  
Residential Units  
Under Development

\*As on 31 December 2023





# MANGROVE

## CREEK BEACH

For more information please call 36227 800 (UAE) / 1688 366 4 971+ (International)  
or talk to our Property Advisor directly at 8844 4888 971+ from 9 AM to 7 PM (GST), Monday to Friday.  
Visit our online sales centre at [emaar.com](http://emaar.com) or any of our Sales Centres across the UAE.

### DUBAI

Emaar Sales Centre | Next to Souq Al Bahar, Downtown Dubai  
9:30 AM to 10 PM, Sunday - Friday  
9:30 AM to 7 PM, Saturday

Dubai Hills Estate Sales Pavilion | Umm Suqeim Road  
Dubai Creek Harbour Sales Pavilion | Ras Al Khor  
From 9:30 AM to 7 PM, Sunday - Saturday

### ABU DHABI

Emaar Sales Centre | Al Nahda Tower, Ground Floor, 4th Street, Corniche, Al Muroor Road  
From 9:30 AM to 7 PM, Sunday - Friday

The Emaar logo is displayed in a large, white, serif font, centered horizontally in the lower half of the image. It is superimposed over a background of a sunset over a body of water with a city skyline in the distance. The sun is low on the horizon, creating a golden glow and reflecting on the water. In the foreground, there are several wooden piers or docks extending into the water, with a small lighthouse-like structure on one of them. The overall scene is serene and picturesque, capturing the beauty of a coastal city at dusk.